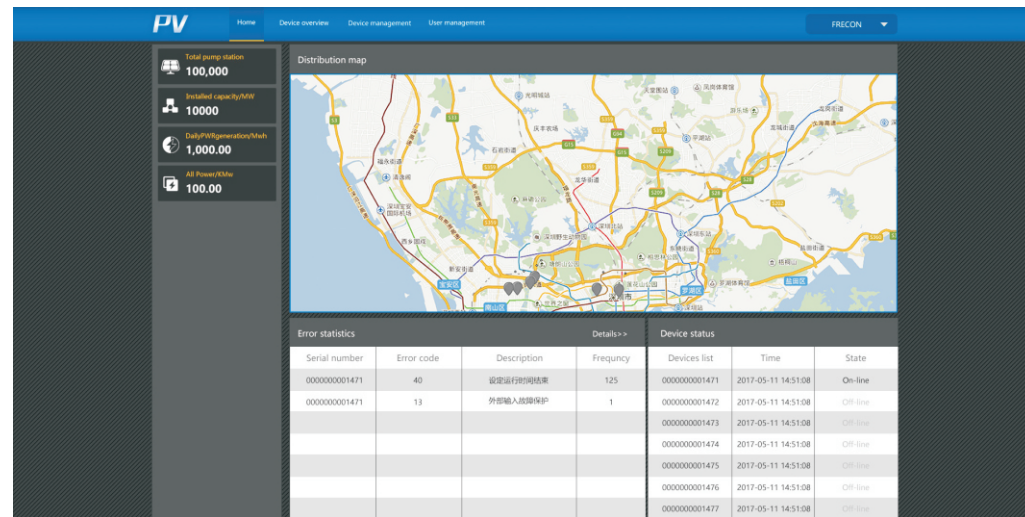
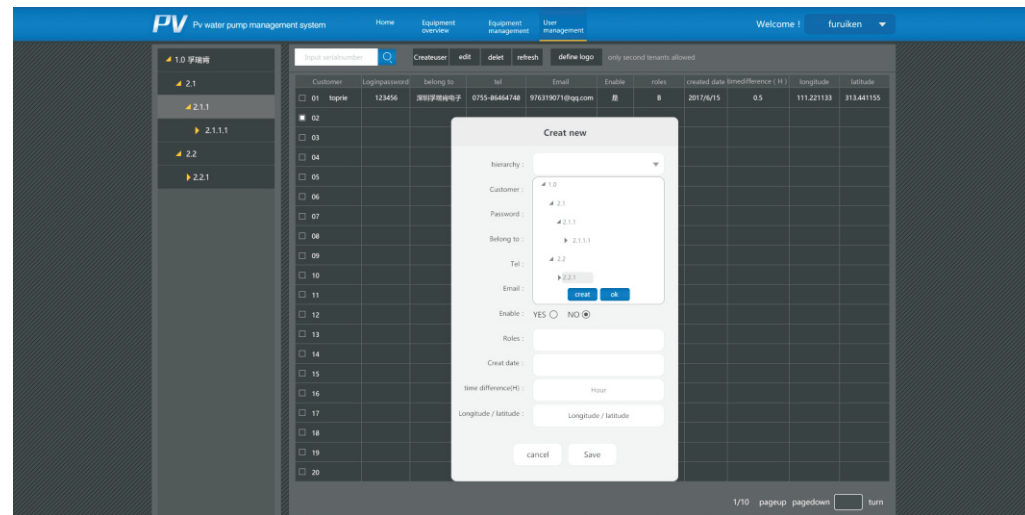


RCS Function Introduction



1. Checking the connecting devices , total power , today generated power and the accumulative generated power total of the current account and its sub account.
2. Fault statistics : current account and its sub account failure times counting, and ranking the failures. Showing failure details and failed device. It's convenient to get a clear image of devices' condition.
3. Displaying the current account's devices status (offline or on line).
4. Displaying the location of devices on map.

RCS Account Management



1. Create or delete account.
2. Multilevel Management, every account can checking its sub account's registration information (customer name, phone number, Email).



FRECON ELECTRIC (SHENZHEN) CO.,LTD.

Add: Floor3,Block C,F&D technology Park Baoan

Road Baoan District,Shenzhen,China

Tel: (+86)-0755-33067999

Fax: (+86)-0755-33 067186

E-mail:overseas@frecon.com.cn

www.frecon.com.cn



For FRECON Website
20170812(V1.0)

FRECON



FRECON Remote Control System(RCS)



GPRS DTU-02



EXC-COM05

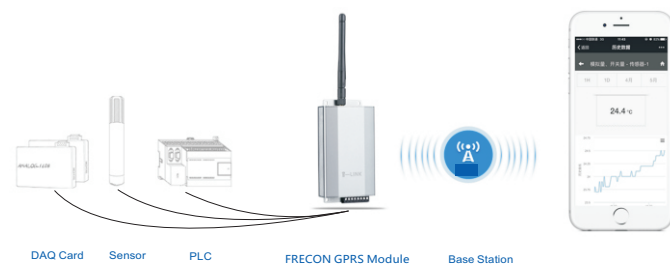


FRECON ELECTRIC (SHENZHEN) CO.,LTD.

GPRS Module Function and Features

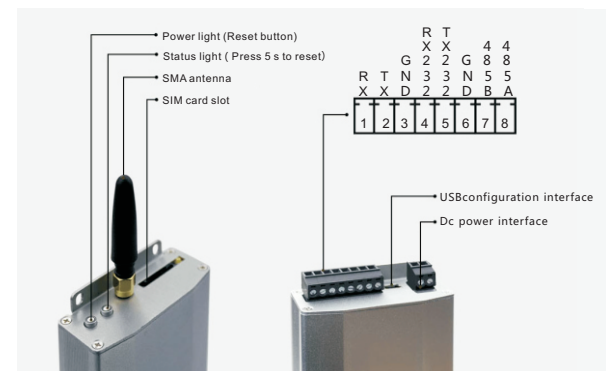
GPRS data transmission
 Wide voltage power supply
 Data rate:300~115200bps (default rate 115200bps)
 3 types of serial digital port:TTL/RS232/RS485
 Support SMS checking, restarting, parameters setting.
 USB configuration ,high accessibility

Simple configuration realize remote connection



Transmitter/Sensor TTL/RS232/RS485

GPRS module specification and port definition

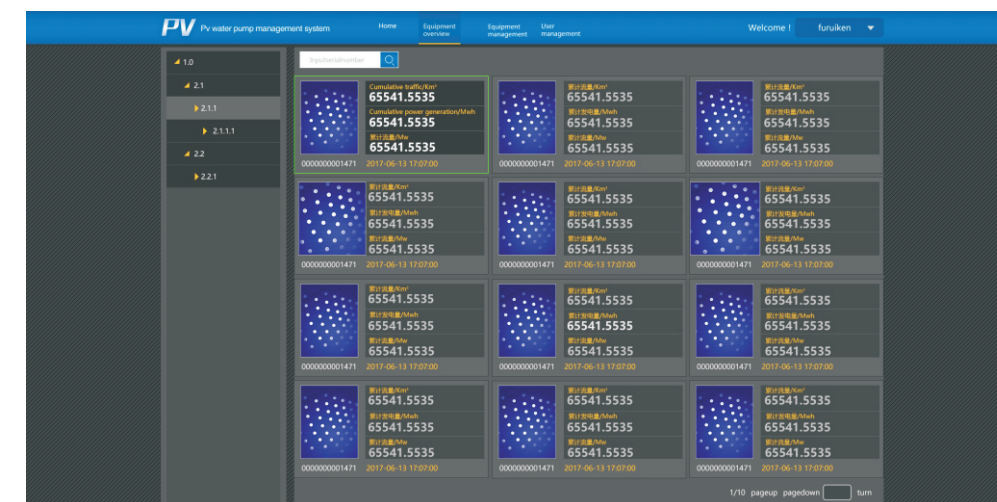


Parameters And Functional Characteristics

Model Number	GPRS DTU-02	EXC-COM05
Installation Method	External	Build-in
Wide voltage power supply	Single power supply voltage range +8V~+28V DC	
Data rate	300~115200bps (115200bps default)	
Serial port cache	10 KB	
Data transmission	GPRS class 10; Maximum 85.6 kbps (Downstream Rate)	
Power	Average working current 85mA @+12V; idle hours current 35mA @+12V	
Operating temperature	-20~70℃	
Operating humidity	below 90%	
Working frequency band	850/900/1800/1900MHZ; GPRS multi-slot class 10/8; GPRS mobile station class B; -Class 4 (2 W @900 MHz); -Class 1 (1 W @1800 MHz)	
Serial data interface	TTL/RS232/RS485	
Dimensions	92*64*26/mm	70*68/mm
Functions And Features	Support dynamic data centre , domain name and IP address. It embedded TCP/IP protocol, and support TCP, MQTT protocols to realize transparent transmission between the device and server. Maximum sending data cache of very communication channel is 10K Bytes, so it can upload date even in network congestion. Transparent transmission model, it can replace data radio, the original system don't need change, minimizing system update investment. Support message parameters checking, long-distance device restart, long-distance parameters setting. Support always online mode. Parameters And Functional Characteristics	

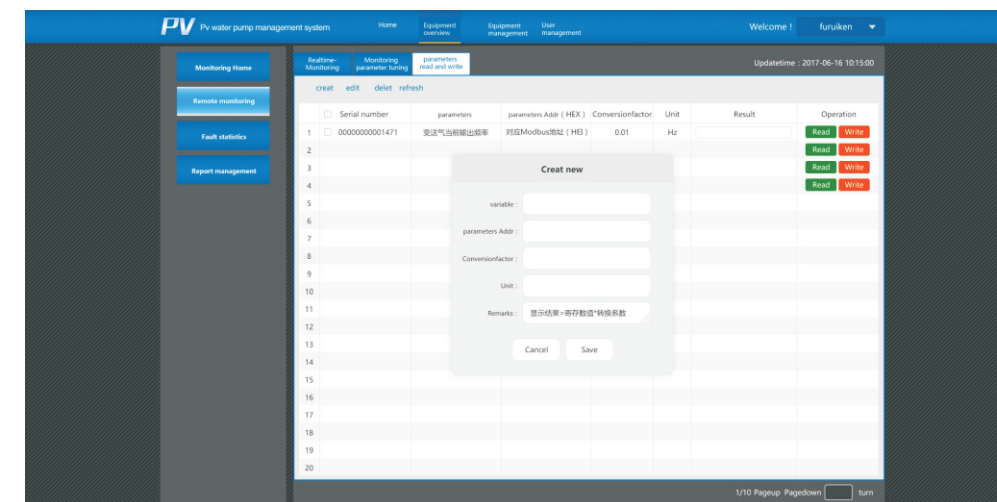
Web Remote Control Software

Device Management



1. Add or delete devices.
2. Devices management, checking the current account and its sub account's devices status and data information.

Remote Control



1. Monitor all selected devices' real time date.
2. Start, stop, reset devices.
3. Read and change the device's parameters.
4. Check the device's fault log.
5. Check monitoring parameters' data changing curves.
6. Output devices' monitoring parameters in 3 months.
7. Check the location of the device.
8. Monitor the device's generated power and water yield.